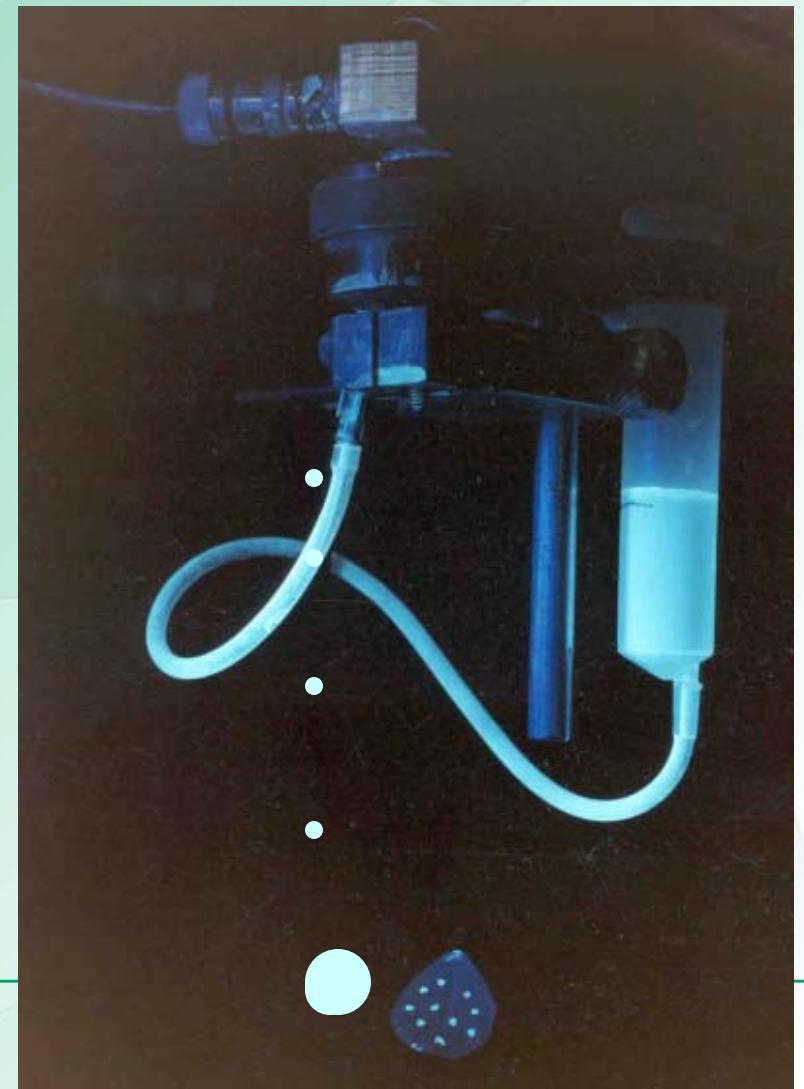
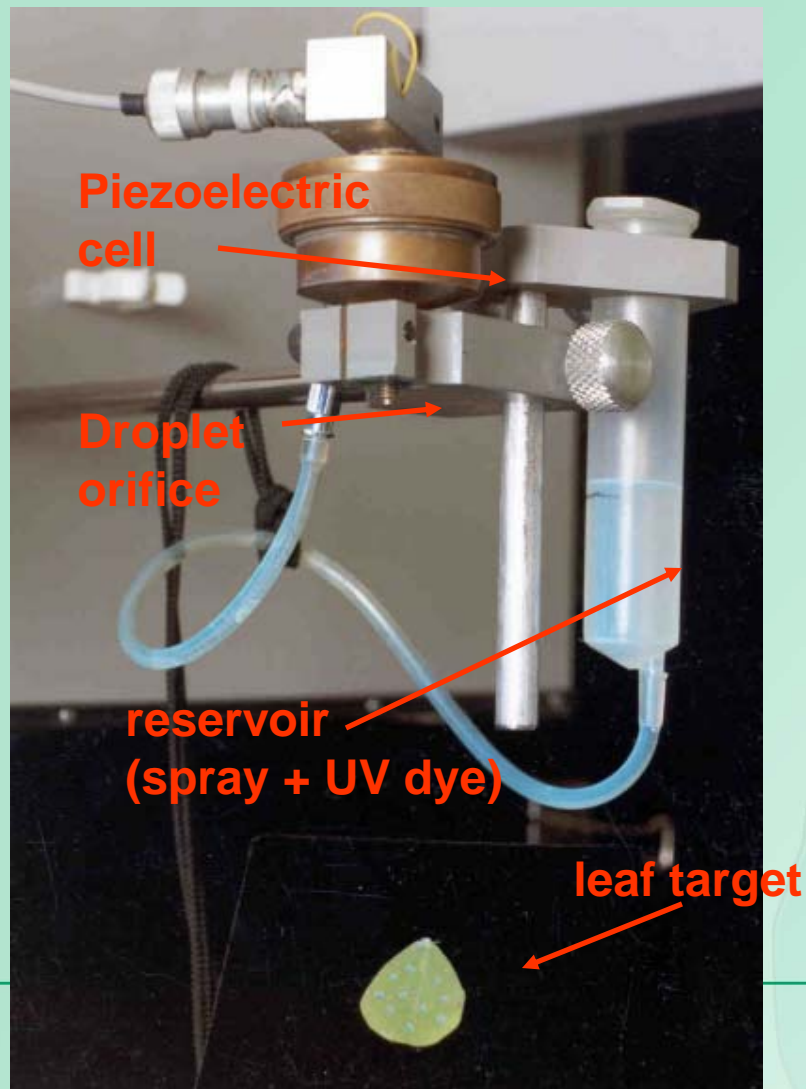


Video Demonstrations

- The following videos show the effects of 3 adjuvants on the adhesion and spread of droplets from a Piezoelectric cell when applied to the back of an avocado leaf as described in the following slides
- Slide 1 shows how the Piezoelectric cell works
- Slide 2 shows the difficulty of wetting the back side of an avocado leaf
- Slide 3 shows the set up of the leaf on the stage (note 3 ft drop is used to simulate spray impact)

Droplet Adhesion to leaf surfaces: Effect of Super-spreader adjuvants

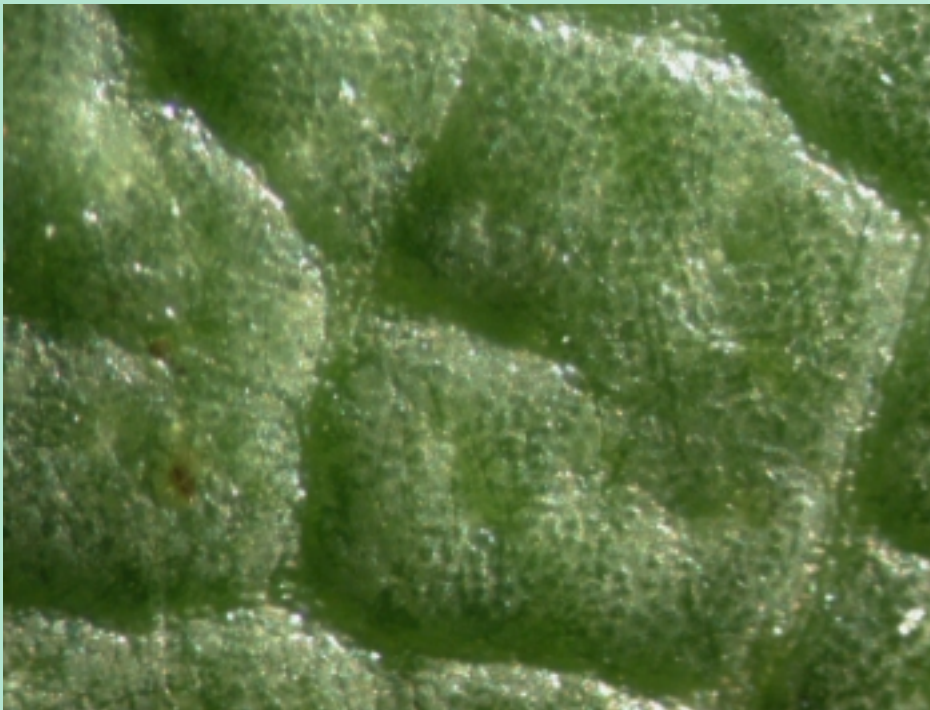
Hi-Wett® & Hi-Wett Xtra



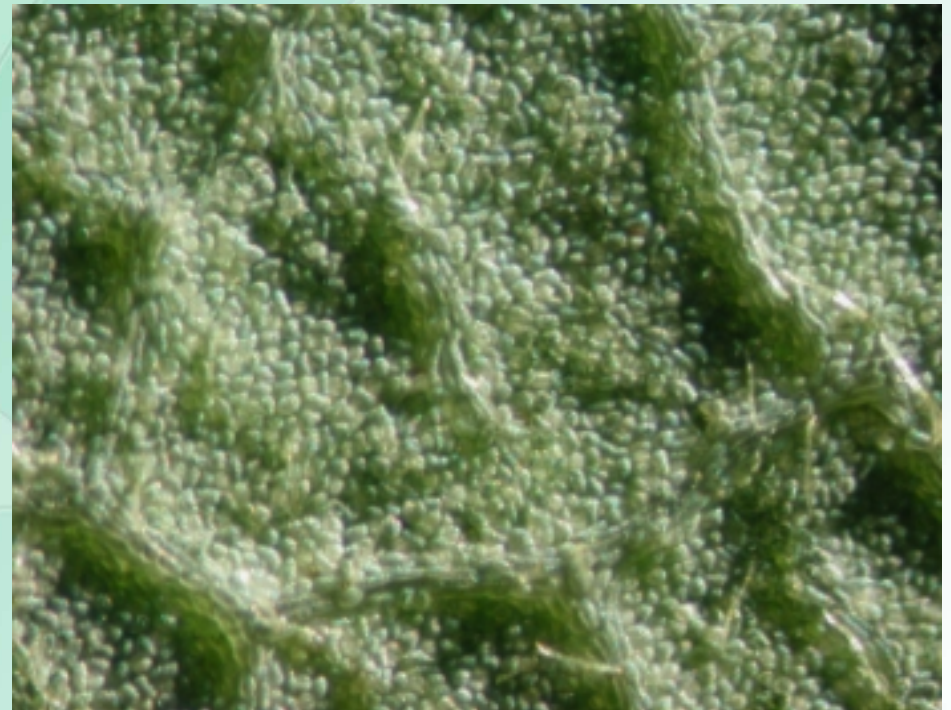
Avocado leaf

Contact Angle = 64°

Contact Angle = 140°



Upper Surface



Lower Surface

Leaf mounted on stage



Fall Distance = 3 ft

Angle = 45°

Droplet Size = 700 μm